

Coromandel Street and the Town Belt

How everyone can win

Tabled Information - Reference 010/13PT(i)

113 years in Coromandel St




The situation: then

NDHA
NATIONAL DIGITAL HERITAGE ARCHIVE

Newtown, Wellington, with Wesley Ewart Hospital an... ▾

Language: English

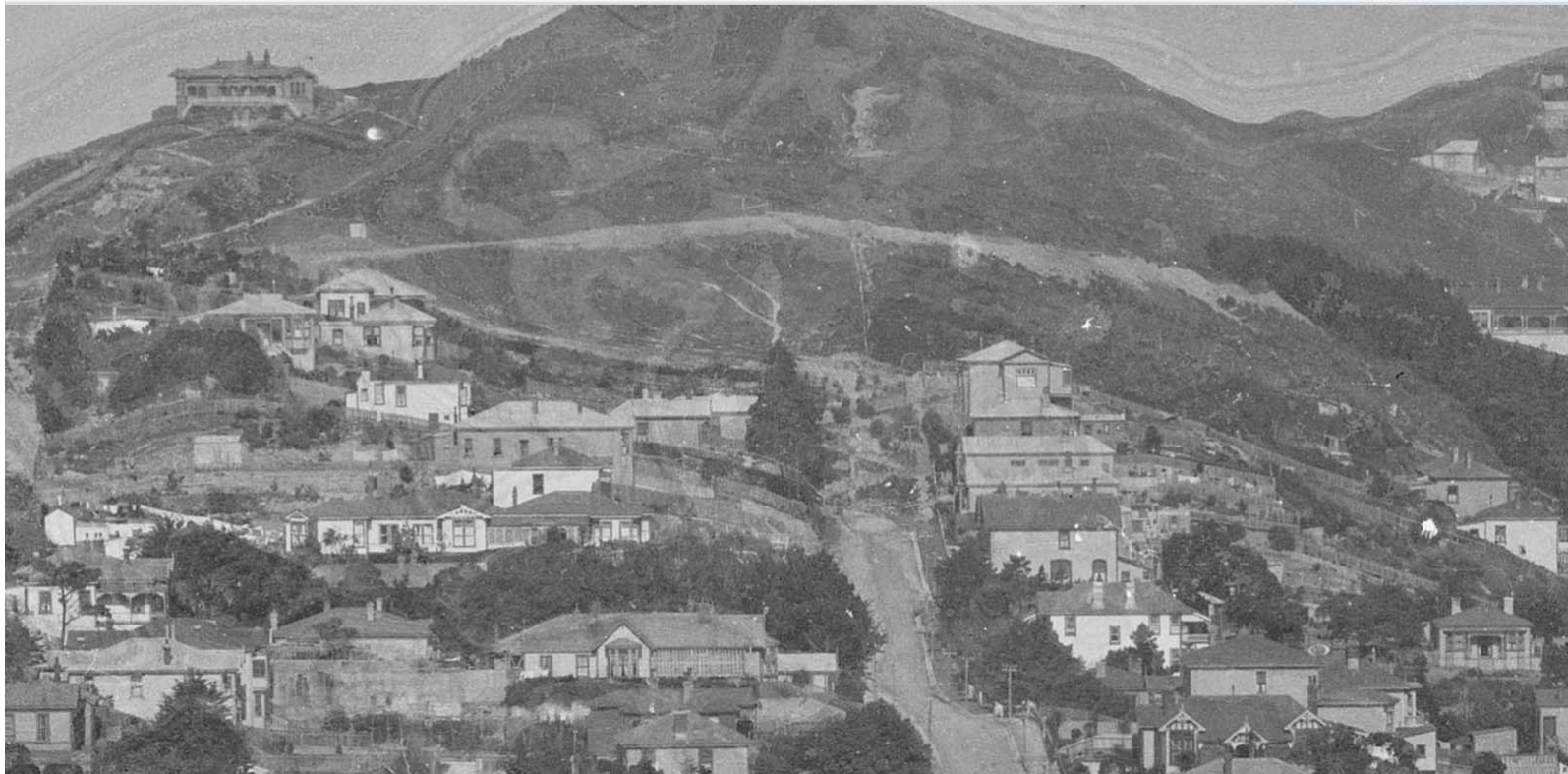
⏏ 🔍 ... 🔍 🗑️ 🗑️ 🗑️



© Ex Libris Ltd., 2012

Terms of Use

The situation: now



What's worth keeping

- Residents and owners having access to properties to maintain and develop them
- The community's stewardship
- A focus on health, safety, and security
- The use of existing infrastructure on the Town Belt to resolve problems caused by the original town plan

What should be avoided

- Exacerbating parking and overcrowding issues on Coromandel Street
- Undermining the health, safety, and security of residents and the public
- Increasing demand on Council resources

Future state – everyone wins

- Residents and owners access their properties by using existing infrastructure on the town belt
- Gate remains to manage illegal behaviour
- Residents continue stewardship: town belt is safer for public
- Parking and other issues for wider community are mitigated
- Council resources directed to best use, not wasted